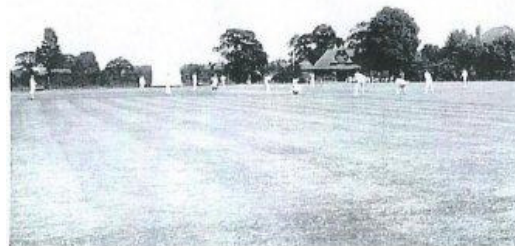




LUDLOW ROAD



BRENTTHAM WAY



CRICKET GROUND



BRENTTHAM GARDEN SUBURB EALING

The Queen of London's Residential
Suburbs West of Town



● Small and medium sized houses of unusually attractive designs situate on a mature Garden Village Estate which still retains the original rural atmosphere, although within eight miles of Piccadilly Circus.

● As will be seen by the illustrations, the style of architecture is distinctive, the design being on English country cottage lines. Prior to its development 30 years ago the Estate was thickly wooded and wherever possible trees have been preserved in the gardens and adjoining land, the general outlook from each house being most attractive.

For the benefit of residents there is a Sports Club with spacious grounds, the social atmosphere being of a warm and friendly nature. The different activities of the Club include golf, tennis, cricket, bowls, in addition to billiards, table tennis and other indoor games. While the Estate is restricted to residential purposes only, good shopping centres and schools are within very easy reach and Ealing Broadway Underground Station is within a short 'bus ride. Brenttham Halt Station (G.W.R. from Paddington) is within a few minutes walk as also is the Western Avenue with its many progressive business developments.

● The houses offered for sale are of first-class construction and have been thoroughly overhauled internally and externally. Modern improvements and labour saving devices have been incorporated including entirely new bathroom and kitchen fittings, all tiled fireplaces, and the decorations have been expertly carried out in artistic and pleasing styles.

Prices from **£625—£975**
FREEHOLD

Total Cash Deposits
from **£45**

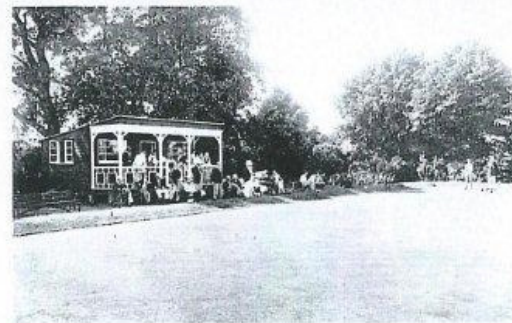
Total Weekly Outgoings
(inc. rates) from **20/7**

INSPECTION CORDIALLY INVITED

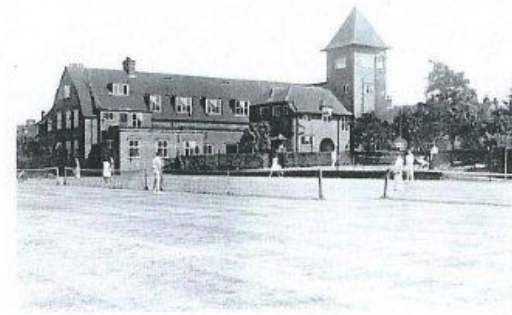
Office Hours: 9—5, Saturdays 9—12-30. Evenings or Week-ends by appointment

EALING TENANTS LIMITED

81 FOWLER'S WALK, BRENTTHAM GARDEN SUBURB, EALING



BOWLING GREEN



TENNIS COURTES AND CLUB HOUSE



HOLYOAKE WALK

